

# Scan Engine SE10



## Ultra-Compact & Lightweight

With dimensions of just  $21.5 \times 7.0 \times 9.9$  mm and weighing less than 5g, it is designed for effortless integration into small devices.



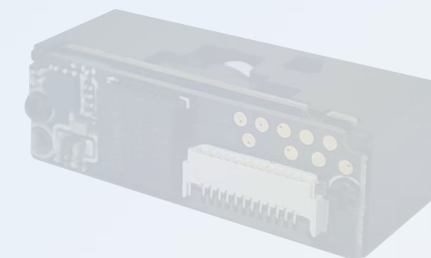
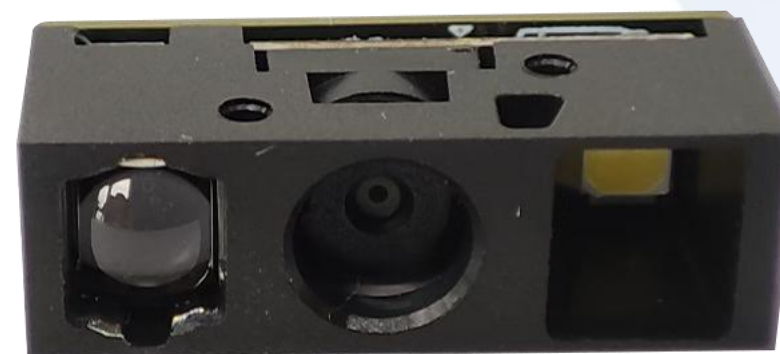
## High-Performance Global Shutter

Featuring a global shutter CMOS sensor with red LED aiming, it delivers fast and accurate scanning for a wide range of 1D and 2D symbologies.



## Robust Environmental Adaptability

Built to perform in harsh conditions, it operates in temperatures from  $-20^{\circ}\text{C}$  to  $65^{\circ}\text{C}$  and withstands ambient light up to 100,000 LUX.



Supermarket



Payment



Self-order



Mall



Unattended



Parking

Category / Item	Specification Details
PERFORMANCE	
Image Sensor	CMOS
Resolution	640*480
Shutters	Global
Illumination / Aiming	White LED / Red LED
Symbologies	<b>2D:</b> QR, Datamatrix, PDF417, Micro QR, Micro PDF417, Hanxin, GridMatrix, Aztec, Maxicode, GS1 QR, GS1 Datamatrix, GS1 Composite(CC-A/CC-B/CC-C) <b>1D:</b> Code128, Code39, Code 39 full ascii, Trioptic Code39, Code 32, Code93, UPC-A, UPC-E, UPC-E1, UPC-E+, UPC-A+, EAN8/JAN8, EAN13/JAN13, Bookland EAN/ ISBN, Interleaved 2 of 5, Matrix 2 of 5, Industrial 2 of 5, Chinese 2 of 5, Codebar, Code 11, MSI, ISBT, GS1-128, GS1 Databar14, GS1 Databar Limited, GS1 Databar Expanded, Postal Codes by Country
Typical reading depth of field	5mil CODE39: 3.5~16cm ; 13mil EAN13: 5~34cm ; 10mil Datamatrix: 3.5-18cm ; 10mil QR:3~15cm ; 10mil PDF417: 3~21cm
Resolution	3mil
Contrast of symbols	≥20%
Scan angles	tilt: 360° , pitch: +60° , skew: +60°
FOV	Horizontal 40.8° Vertical 32°
ELECTRONIC	
Weight	<5g
Communication interface	UART TTL, USB HID, USB VCOM
Dimensions	21.5(L)x7.0(W)x9.9(D) mm
Alerts	LED, buzzer signal output
operating voltage	3.2~3.6V
Operating / Standby Current	<b>Operating:</b> 230mA@3.3V (sweep state, average current) / <b>Standby:</b> 45mA@3.3V (standby, USB on) , 40mA@3.3V (standby, USB off)
ENVIRONMENTAL	
Temperature (Op/Storage)	Operating: -20°C~+65°C   Storage: -40°C~+70°C
Storage Humidity / Operating Humidity	5-95% Non-condensing
Environmental lighting	0~100000LUX



**Dokivision**

block B,no.88,ximei Rd,wuxi City,JiangSu Provice.china



**Email Support**

info@dokivision.com



**Direct Contact**

+86 021 25460014