

## Embedded module EM95



### High-Resolution Imaging

Equipped with a 1280\*800 CMOS sensor and Red LED illumination, it ensures precise scanning of complex 1D and 2D barcodes.



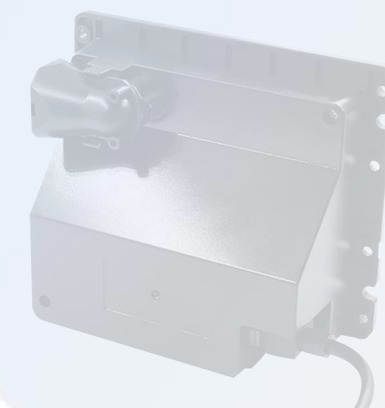
### Robust Embedded Design

Designed for self-service kiosks and unattended terminals, it features a compact form factor with an IP52 rating for dust and water resistance.



### Flexible Connectivity

It supports both USB and RS232 interfaces, providing versatile integration options for various payment and gate systems.



Supermarket



Payment



Self-order



Mall



Unattended



Parking

# EM 95 TECHNICAL SPEC



Category / Item	Specification Details
<b>PERFORMANCE</b>	
Image Sensor	CMOS
Resolution	640*480 ; 1280*800
Illumination	White LED
Symbologies	2D: QRCode;Micro QRCode;OCR Code   UCC Composite;Aztec;China Sensible Code;Datamatrix;DotCode; 1D: Code EAN/UPC;GS1DataBar(RSS-14);Code39;Code 128(GS1-128)   Code ISBT 128;Code Standard 2of5;Compressed 2of5;Datalogic 2of5;Industrial 2of5;Interleaved 2of5 (12of5);Matrix 2of5;Codabar;Code11Code93;MSI;Plessey;BC412;ISSN Postal Codes:Australian Post; British Post; China Post; IMB; Japanese Post;KIX Post; Korea Post; Planet Code; Postnet; Royal Mail Code Stacked Codes:EAN/JAN Composites; GS1 DataBar Composites;GS1 DataBar Expanded Stacked; GS1 DataBar Stacked;GS1 DataBar Stacked Omnidirectional; MacroPDF;MicroPDF417; PDF417; UPC A/E Composites
Min. decoding resolution	4 Mil (1D)
Reading Indicators	Beeper, LED indicating lamp
DOF	EAN-13(13mil): 0mm~150mm QR (15mil): 0mm~100mm
Scan Angles	Pitch: +60° ; Roll: +180° ; Yaw: +70°
FOV	70° D×60° H×41° V
<b>ELECTRONIC</b>	
Weight	136g (not include cable)
Interface	USB, RS232
Dimensions	113mm(W)x93mm(D)x45mm(H)
Voltage	5VDC+5%
Current@5 VDC	344mA (RMS Typical), 486mA (RMS Max)
Power	1.25W (Typical)
<b>ENVIRONMENTAL</b>	
Temperature (Op/Storage)	Operating: -20°C~+50°C   Storage: -40°C~+70°C
Storage Humidity / Operating Humidity	5-95% Non-condensing
IP Rating	IP52